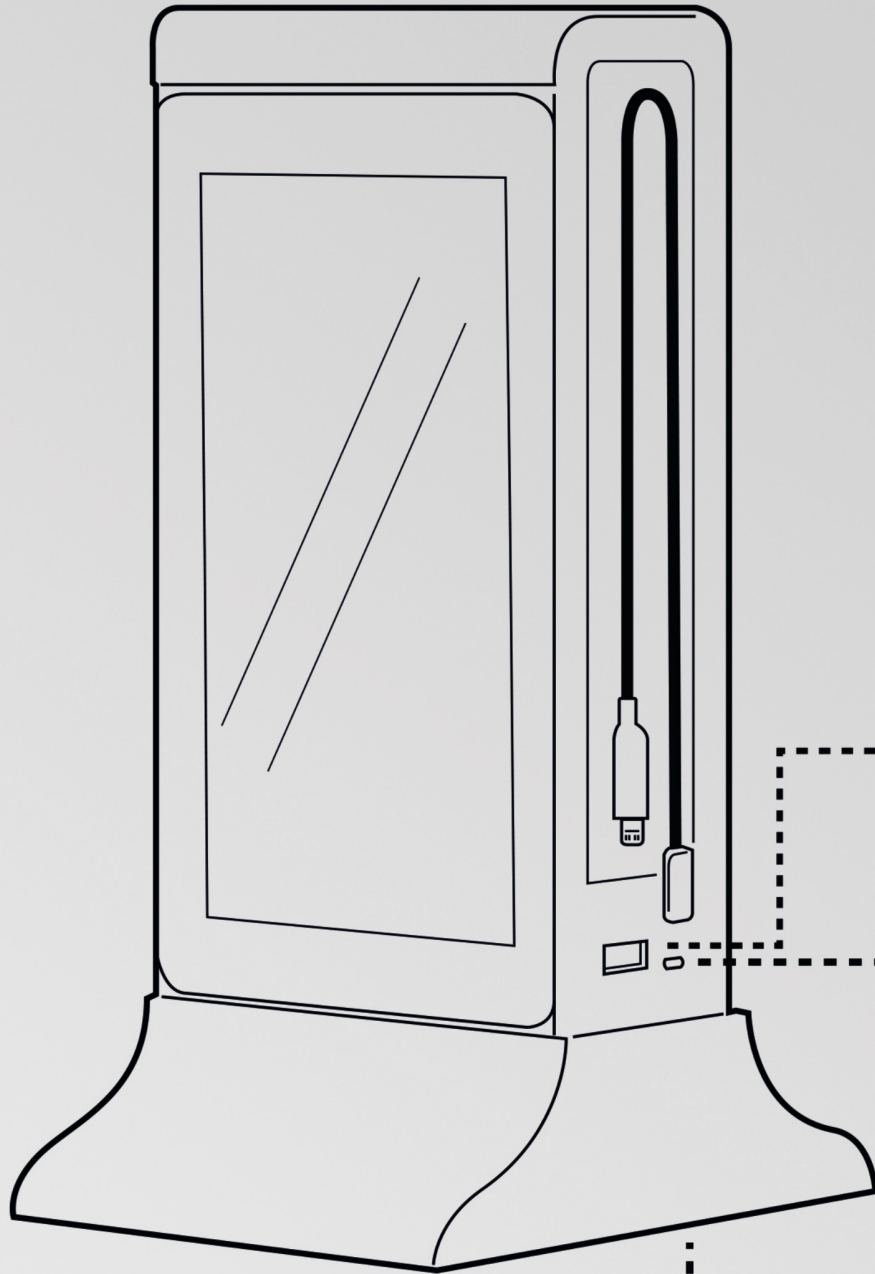




SmartCharger



USB PORT
ONE ON EACH SIDE

BATTERY CAPACITY INDICATOR BUTTON

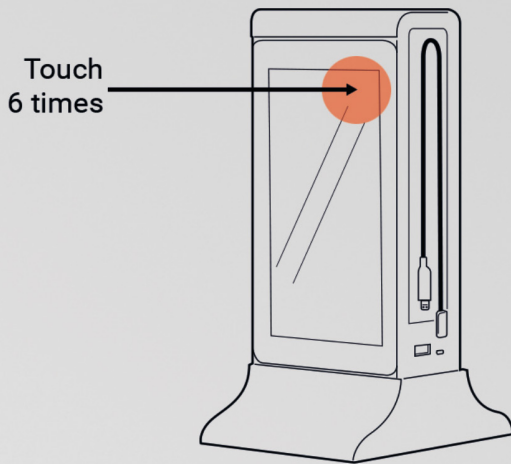
POWER BUTTON
AT THE BOTTOM



First steps with OKO™

Setting up your OKOTM is very easy. You just need to follow these instructions:

1. Turn on OKO Charger and press the top right corner 6 times to access the administration.

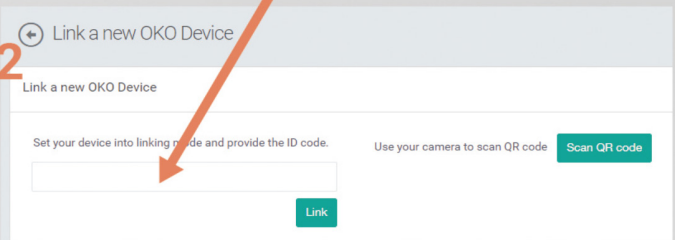
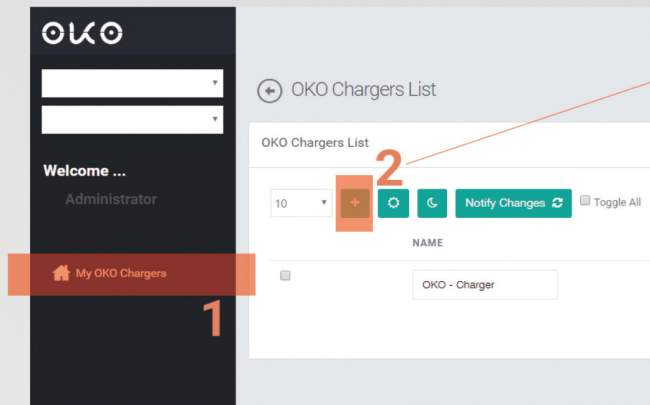


2. First of all access the configuration and configure a WIFI connection. Then in point 2 you can link and unlink the device.



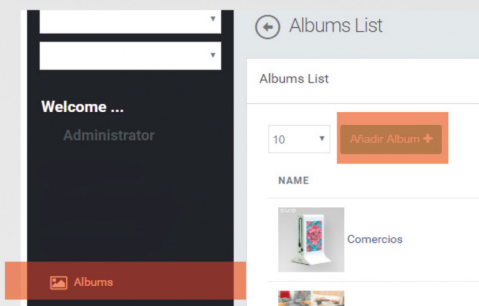
Use this code in OBS to link the device.

3. Access OBS with your user. In the left menu section my oko chargers, there you can manage your device.



4. Link the device. Use the code displayed on the OKO Charger screen to link the device to your user.

5. To send content to the device, first of all you have to create an album.



6. Go to device's list, in the album column you must choose the album previously created and click on **Notify Changes**.

